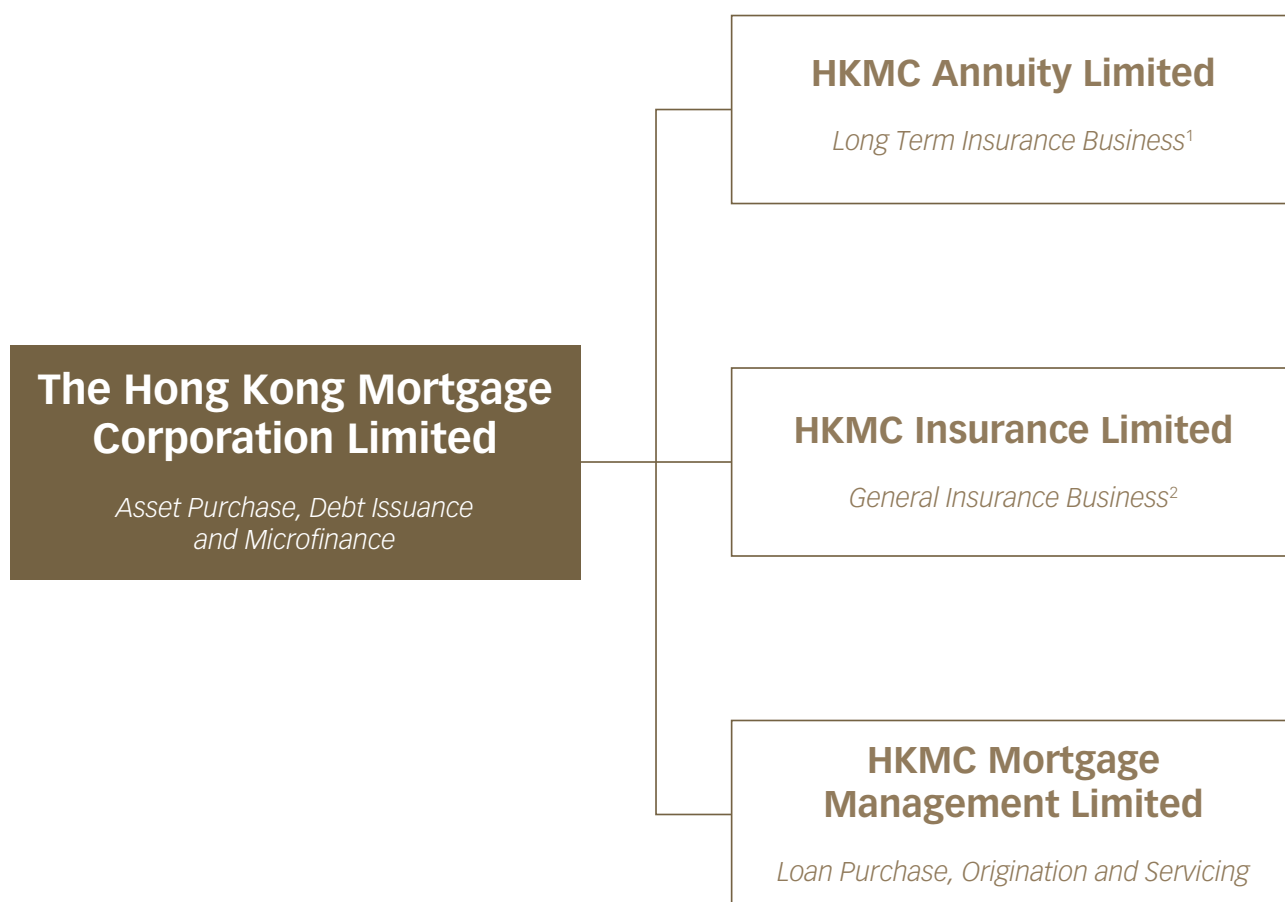


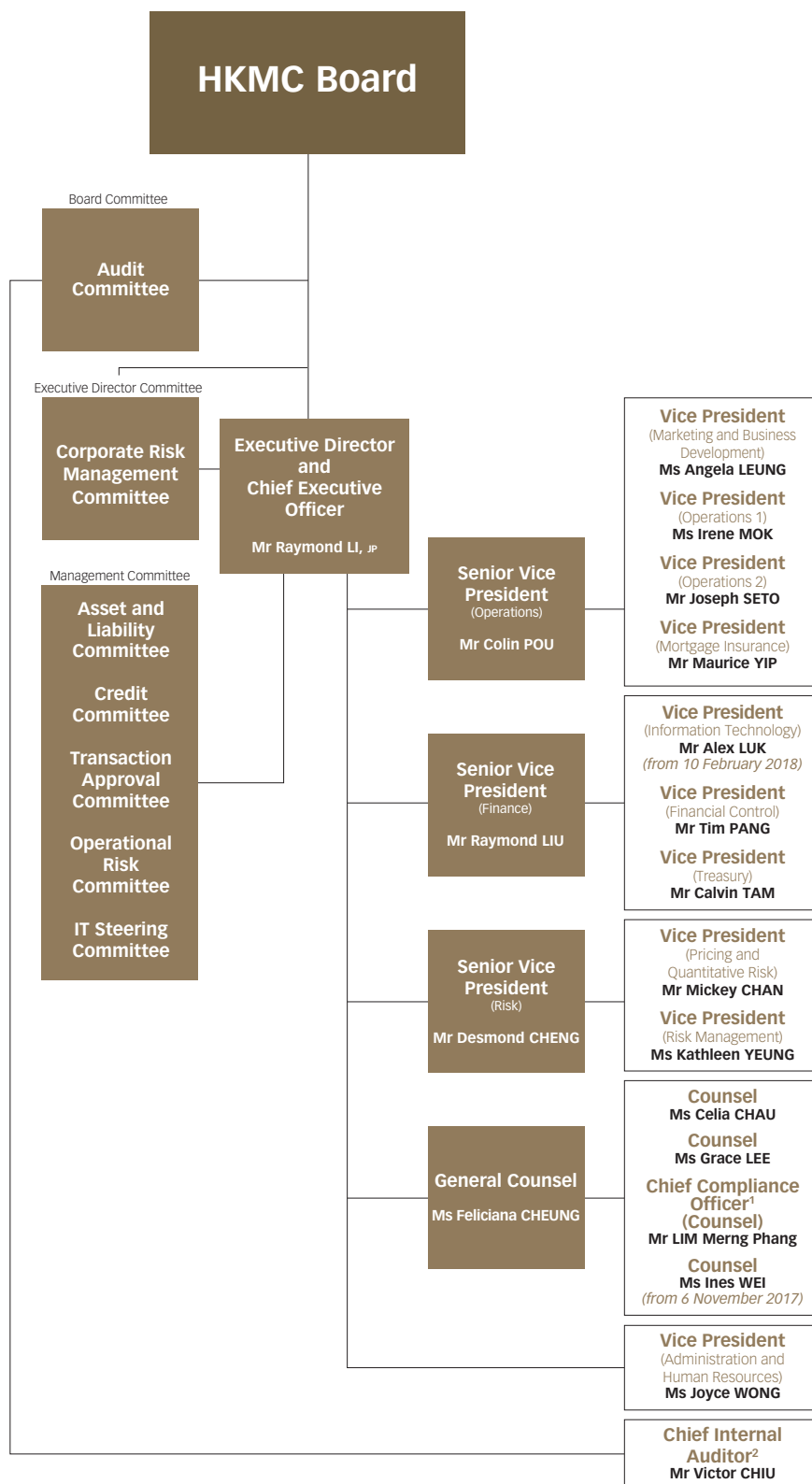
# Organisation Structure

# Organisation Structure



<sup>1</sup> To commence upon regulatory authorization

<sup>2</sup> Transferred from The Hong Kong Mortgage Corporation Limited in May 2018



<sup>1</sup> Reporting to the Chief Executive Officer through the General Counsel

<sup>2</sup> Reporting to the Chief Executive Officer on daily administrative function

